

Tools and Systems to help Effectively Implement the PSMA



June 2022
UN Ocean Conference, Lisbon

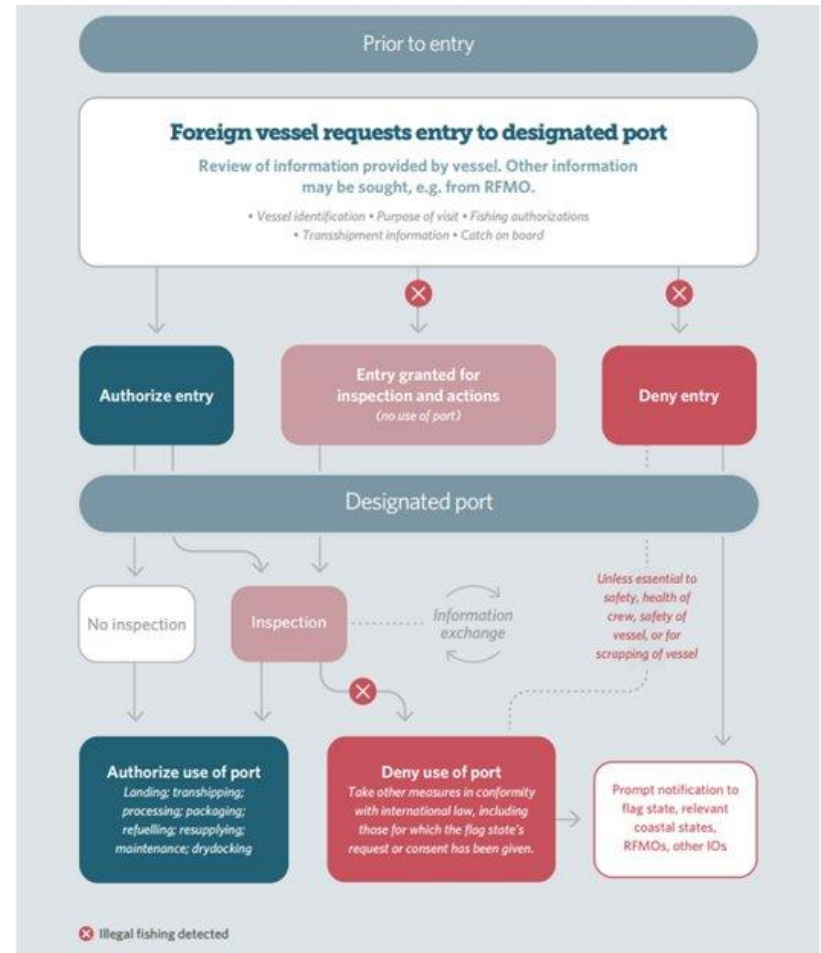
Agenda

- PSMA implementation
- Information sharing
- Complementary instruments
- Coordination
- Summary



PSMA Implementation

- Fishing either under licence or outside port State's EEZ
- Risk assessment
 - focus resource
 - rigor of inspections
- Information exchange and coordination inter and intra national
- Assistance to support developing States



Information Sharing

- Sharing information underpins effective implementation of the PSMA
- Research demonstrates the beneficial impact on:
 - IUU fishing propensity
 - IUU fishing detection
 - Fishery health
 - Even if the info sharing is not reciprocated
- Coordination between relevant authorities is vital – transparency with each other and trust

Tools and Systems available

- Vessel Monitoring Systems
- Global Record – verification of vessel information
- Global Information Exchange System (pilot) – inspection reports, denial of entry
- Capacity Development Portal
- Designated Ports App
- RFMO e-PSM systems
- IUU vessel lists, carded countries, port State risk index and other publicly available data tools (JAC)

Complimentary Instruments to PSMA

- International Labour Organisation Convention on Working Conditions on Fishing Vessels (C188)
- International Maritime Organisation Cape Town Agreement on Fishing Vessel Safety (CTA)
- Potential harmonization – information exchange
 - IOTC and Indian Ocean MOU on Port State Control
- Workshops in Liberia, Madagascar and Mozambique



Regional Coordination

- OSPESCA and COCATRAM: Joint protocols for vessel inspection and information exchange (Apr '20 - Sep '21)



- Thailand: Joint inspection protocols between fisheries, immigration and labour officers.
- The Marshall Islands: Technical support from NZMFAT and FFA to implement effective PSMs

Summary

- Information sharing and coordination is at the heart of effective implementation of the PSMA, it helps:
 - Risk assessment
 - Resource prioritization
- VMS, Global Record and GIES can help
- ILO C188 and IMO CTA can compliment the PSMA and help internal coordination
- Assistance is available to help developing States



THE PEW CHARITABLE TRUSTS

Thank you!



Elizabeth Wilson
Senior Director, Environmental Policy
The Pew Charitable Trusts
ewilson@pewtrusts.org